

Stafford County

Fabrics by
Jo Morton



Quilt designed and made by Candy Hargrove
Longarm quilted by Debbie Roberts

Finished size: 74½" x 84"



makower uk®

1384 Broadway • New York, NY 10018
(800) 223-5678 • www.andoverfabrics.com

Stafford County

Fabrics by
Jo Morton



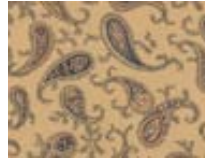
Fabrics shown are 25% of actual size.
Fabrics used in quilt pattern are indicated in red.



4183-B 2¼ yds



4184-B 1¼ yds



1802-LB 1 yd



4185-B ½ yd



4186-N ½ yd



2831-W* ⅓ yd



4187-C ⅝ yd



4188-B



4190-C ¼ yd



3300-P** ⅝ yd



3887-B 1⅜ yds



WV4189-B
(includes binding)



4183-G



4184-G



1802-LG



4185-O



4186-G



2831-V



4187-G



4188-G



4190-Y



3300-Y



3887-R



WV4189-N ⅓ yd



4183-R



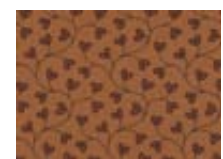
4184-R



1802-LR



4185-N



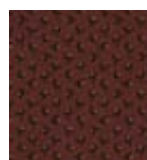
4186-Y



2831-R



4187-O



4188-O ⅝ yard



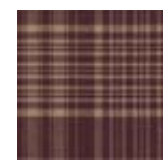
4190-R



3300-LR



3887-N1 5⅜ yds
(backing)



WV4189-RN

*From the Covey Toile collection **From the Crimson and Clover Collection

Fabric	10 kits	20 kits	30 kits	Fabric	10 kits	20 kits	30 kits
4190-C	1	1	1	WV4189-N	1	1	2
3300-P	1	1	2	4184-B	1	2	3
4186-N	1	1	1	2831-W	1	1	2
1802-LB	1	2	2	4188-O	1	1	2
4187-C	1	1	2	4183-B	2	4	5
3887-B	1	2	3	Backing			
4185-B	1	1	1	3887-N1	4	8	12

*Yardage needed for backing (5⅜ yards or two 90" x fabric width lengths per kit)

Kit require-
ments are
based on a
minimum
of 15 yards
per bolt